

BANYAN STREET CAPITAL

THE EXPERIENCE MATTERS

Banyan Street Capital is a minority- and women-owned firm that is a premier owner-operator of office and multifamily assets across key markets in the eastern and southern United States. We have achieved and work to create superior, risk-adjusted returns for our investor partners. Driven by a hospitality-inspired approach and a tenant-focused way of thinking, our properties are transformed into places that cultivate big ideas and leave a positive impact on the communities we serve. This unique perspective, coupled with the diversity of experience amongst our leadership, results in solutions that are dynamic, strategic and time-tested.

Executing on behalf of our partners

Our principals have invested in more than 30 million square feet of office and more than 12,000 multifamily units over their careers, and our longstanding relationships with leading financial institutions, brokers, investors and advisers stand as a testament to our reputation and respect in the industry. Today, we are one of the largest privately held owners of office buildings in the United States. This standing is achieved by our partners-first philosophy, which keeps our investors at the forefront of our business decisions.

Our partners

Balandis Real Estate AG | Cadre Real Estate | California State Teachers' Retirement System | DRA Advisors | Greystar Real Estate Partners | Independencia Asset Management | KKR & Co. | Oaktree Capital Management | PCCP | Silverpeak Real Estate Partners | Utah Retirement Systems

Fully integrated services

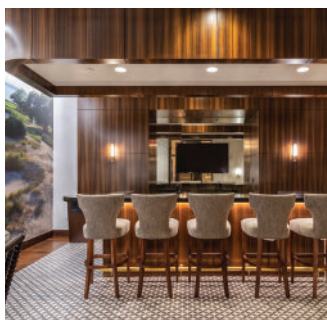
Multidisciplinary, forward thinking at every stage of engagement ensures best-in-class solutions for our investors and tenants alike. With extensive experience acquiring, managing, leasing and disposing of assets, Banyan Street provides a robust platform fueled by on-the-ground expertise.

Areas of expertise

Acquisitions | Property Management | Asset Management | Accounting & Reporting | Construction Management | Development | Technology | Marketing & Programming | Engineering & Sustainability

Driving tenant demand

Banyan Street creates environments that enrich the tenant experience. We pride ourselves on staying ahead of tenant tastes and occupancy requirements. Our holistic approach spans modern amenities, spaces designed for maximum productivity, cutting-edge technological upgrades, and aesthetically pleasing environments.



150+
employees

\$4.7 billion
value of current portfolio

25+
average years of
experience amongst
leadership

25 million
square feet of portfolio
since inception

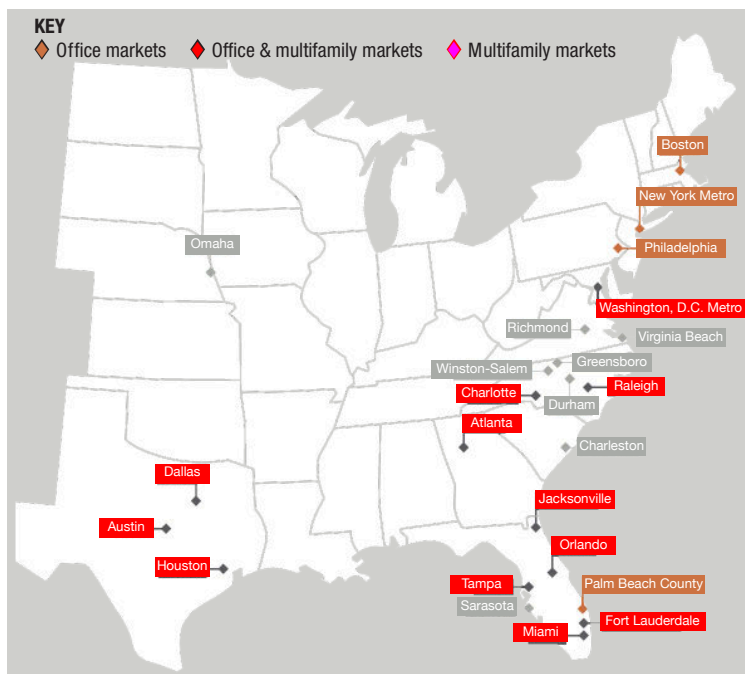
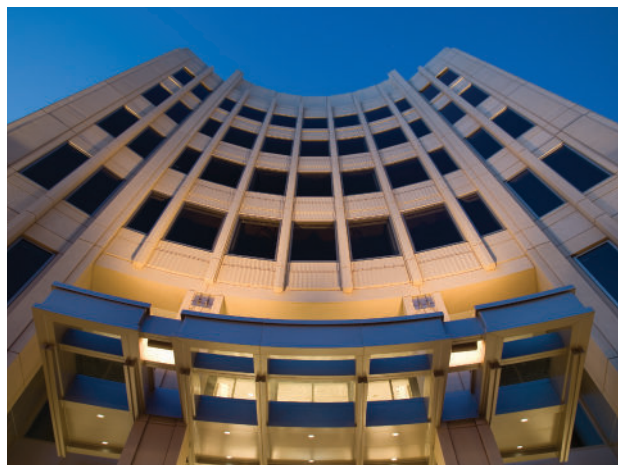
58
office and multifamily
properties

2012
founded

Multifamily

Banyan Street is active developing, converting and investing in the multifamily asset class. In addition to direct investing, Banyan Street Real Estate Funds (BSREF), a private fund series, specializes in naturally-occurring affordable housing, all of which are market rate communities. BSREF's value-add funds focus on a strategy of sustainably renovating affordable multifamily properties in a socially-responsible way to enhance return and mitigate risk. The team has invested in/developed over 12,000 units and brings over 90 years of combined experience, managing both high-net-worth and institutional investor capital.

Our reach
Our focus on key markets in the eastern and southern United States provides us the ability to focus, evaluate and act upon investment opportunities based on dynamic market conditions, prior ownership, distressed situations, capital structures or capital investments.



191 Peachtree
Tower
Atlanta

Salesforce
Tower
Atlanta

American
Center
Tysons, Va.

Bank of America
Plaza
Tampa, Fla.

Rivergate
Tower
Tampa, Fla.

180 Maiden
Lane
New York City

Ascent
Peachtree
Atlanta

BANYAN STREET CAPITAL

Team
Driven by what unites us, Banyan Street is comprised of the most talented minds in the industry. Working together, the team leverages local market knowledge, capitalizes on relationships and continually breaks new ground with placemaking solutions.

Rudy Prio Touzet
Founder / CEO

Lorri L. Dunne
COO / Sr. Managing Director

K. Taylor White
CIO / Sr. Managing Director

Vic Bucchere
Sr. Managing Director,
Equity & Debt Investments

Noble Carpenter
Sr. Managing Director, Capital Relationships

David Sturmer
Sr. Managing Director, Construction & Property Mgmt.

Zac Gruber
Managing Director, Asset Management

Lawrence Chapman
Managing Director, Asset Management

Marti Blackstock
Managing Director, Property Management

W. Derik Keel
Vice President, Construction

Daniel Zweig
Managing Director, Accounting

Samantha Williamson
Managing Director, Accounting

For more information, please contact:

info@banyanstreet.com
www.banyanstreet.com

Miami (HQ)

80 SW 8th St., Suite 2200
Miami, FL 33130
T: 305.722.9400

New York

250 Park Ave., Suite 1903
New York, NY 10177
T: 212.944.4747

This article has been written for informational and educational purposes only and should not be considered as investment advice or as a recommendation of any particular security, strategy or investment product. Past performance is not necessarily indicative of future performance. Investors must consult the applicable private placement memorandum for a discussion of the risks specific to any investment program.